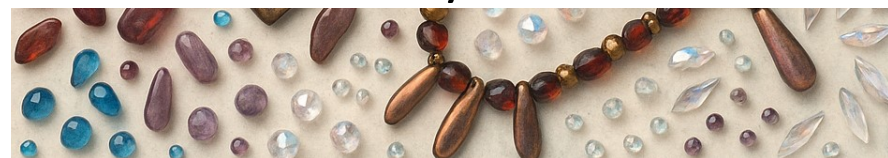


Collector Crate — Chaotic Beauty

CONTENTS



Selection A* 3mm Montana Blue AB Rounds <i>Czech Glass</i> ~100 beads	Selection E* 18x12mm TC Rosaline/ Crystal Drop Window <i>Czech Glass</i> ~3 beads	Selection I 9mm Siam Ruby Berry Leaves <i>Czech Glass</i> ~18 beads	Selection L 14mm Sharkskin Cushion Rounds <i>Czech Glass</i> ~4 beads	Selection O** 4mm FP Crystal AB <i>Czech Glass</i> ~50 beads
Selection B 6mm Jet AB Bicones <i>Czech Glass</i> ~25 beads	Selection F 3mm FP Dark Topaz <i>Czech Glass</i> ~50 beads	Selection J 8mm 3H Luster Champagne Quatrefoil Tiles <i>Czech Glass</i> ~10 beads	Selection M** 6mm Hexagon 2H Beads—Assorted <i>Czech Glass</i> ~30 beads	Selection P** 2x5mm Matte: Amethyst or Sapphire Matubo SuperDuos <i>Czech Glass</i> 2.5" tube
Selection C* 15x7mm Jet Full Azuro Owls <i>Czech Glass</i> ~10 beads	Selection G 2mm Hyacinth or Amethyst Rounds <i>Czech Glass</i> ~100 beads	Selection K 18mm Brass Plated Bead Frame <i>US Pewter</i> 1 bead frame	Selection N** 15mm TC Jet & Bronze Carved Squares <i>Czech Glass</i> ~2 beads	Selection Q** 6x13mm Jagged Daggers Assorted <i>Czech Glass</i> ~25 beads
Selection D Toho 8/0 Hyacinth <i>Japanese Glass</i> ~8 grams	Selection H 6mm Med. Amethyst Rondelles <i>Czech Glass</i> ~50 beads	*Collector Amount **Collector Exclusive FP—Fire polished, 3H— 3 Hole, 2H — 2 Hole TC— Table Cut		